

Club Med

Phuket Thailand



What's included in Club Med's package? _____

All-Inclusive
Package =



Amazing locations



Return flight
and transfers



Twin share Superior
accommodation
with option to
upgrade to a Deluxe
room or Suite



All-day Dining
on sumptuous
buffet and gourmet
cuisine



Open bar & snacking
served during the
day and night



Night live
entertainment



Sports & Leisure
activities with
expert tuition



Phuket

Thailand

FAMILY RESORT

With children's clubs
from age 2 to 17 years
inclusive



A Serene, Cultural Paradise on the Island of Phuket

something to tempt you

- On the shores of Kata Bay, enjoy the view of this beautiful public beach stretching for 1,200 metres
- Superb Deluxe Rooms* and Suites* built in the style of the local "long-houses"
- Golf: nine-hole pitch and putt course and putting green
- Relaxation: beauty treatment at the Club Med Spa* and yoga for beginners
- Sports for all ages: circus school, snorkeling and scuba diving*

Awards

Top 3 Signature Leisure & Recreation Resort of the year
by Hospitality Asia Platinum Awards 2008-2010





Baby Club

Your Club Med Premium All Inclusive Holiday

- ☑ Accommodation in a Superior Room - other room types available at extra cost
- ☑ All meals, wine, beer and soft drinks
- ☑ Bar drinks and snacking
- ☑ Club Med Baby Welcome® (4 to 23 months)#
- ☑ Mini Club Med® (4 to 11 years)
- ☑ Club Med Passworld® (11 to 17 years)
- ☑ Sports with all levels of courses: flying trapeze (with circus activities), golf
- ☑ Sports Discovery Lessons (beginner courses): snorkeling, Club Med fitness, archery, aquafitness and tennis (during winter season)
- ☑ Free Access to Sports Facilities: beach volleyball, cardio and weights room at Club Med Gym, squash, volleyball, basketball, beach soccer, mini soccer, petanque, table tennis, tennis
- ☑ Swimming pool
- ☑ Evening entertainment

Make it extra special*

Optional extras - pre-book**

- Room upgrade
- Baby Club Med® (4-23months)
- Petit Club Med® (ages 2 to 4)
- Special scuba-diving classes
- Club Med Spa Packages

Optional extras - book on site**

- Babysitting

Highlights of the Excursions**

- Phang Nga Bay** (1 day)
- The Phi-Phi Islands (1 day)
- The Forgotten Temples Trail (1 day)
- Bangkok

* At extra cost.

** Enrollment either at the time of booking or on site (depending on the service) is subject to availability and conditions of sale and prices applicable at the Club Med Resort.

Childcare equipment included in the holiday package such as cot bed, baby bath, changing table, strollers; specially prepared meals with all utensils necessary for preparing meals and high chairs (on request) in the baby-corners in the main restaurant. This service is subject to availability

Note: subject to change without prior notice

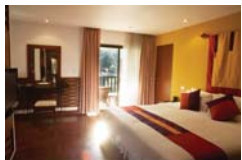


Practical Information

Accommodation



Suite



Deluxe



Superior

ROOM TYPE	VIEW	SIZE	CONFIGURATION	DESCRIPTION	EXTRAS /INCLUSIONS**
Suite	Garden View	40m ² Occ. 1 - 2	Bedroom + Separate living area 1 KB	Suites are beautifully appointed with amenities for your ultimate comfort. The garden view terrace is furnished for you to enjoy the outdoors in privacy.	<ul style="list-style-type: none"> - Two bathrobes and slippers - Champagne, fruit basket on arrival - Garland of flowers on the bed on arrival - Cutlery, plates and napkins - Two bottles of water daily - Board games - Essential oils - Coffee machine - Airport / Resort by private car - Room service breakfast <ul style="list-style-type: none"> - Flat Screen - Radio - Iron in room - Mini Bar ^{refilled daily}* - Bathtub - Wifi access
Deluxe Terrace Balcony	Garden View	30m ² Occ. 1 - 3	1 KB or 2 SB + S/B	Deluxe Terrace Balcony rooms are located either on the ground floor and have a terrace or one level up, with a private balcony. They are spacious and comfortably appointed with modern amenities.	<ul style="list-style-type: none"> - Fruit basket and flowers on arrival - Two bottles of water daily - Essential oils - Beach towels - Turn down service - Umbrellas - Deluxe Honeymoon does not have furnished balcony <ul style="list-style-type: none"> - Flat Screen - Iron in room - Mini Bar - Wifi access
Deluxe Terrace Balcony Connecting (2 rooms for 4-5 people)	Garden View	30m ² each room Occ. 4 - 5	1 KB or 2 SB + S/B in each room		
Deluxe Kingsize	Garden View	15m ² Occ. 1 - 2	1 KB		
Superior	Garden View	15-17m ² Occ. 1 - 3	1 QB or 2 SB + 1 S/B	The Superior rooms are located in two-storey bungalows scattered throughout the verdant Village and all have a garden view.	<ul style="list-style-type: none"> - Two bottles of water on arrival - Wifi access
Superior Connecting (2 rooms for 4 people)	Garden View	15-17m ² each room Occ. 4 - 5	1 QB or 2 SB + S/B in each room		

Occ.: Occupancy KB: King bed QB: Queen bed DB: Double bed SB: Single bed S/B: Sofa bed Lr: Living room
 Note: Bed configuration and ground floor room requests cannot be guaranteed / All room details are subject to change without notice
 **Each room includes basic facilities: • TV and phone • Personal safe • Air conditioning • Mini Fridge • Shower • Hairdryer
 *Additional costs may apply

Club Med Phuket

- South west of Thailand, on the small island of Phuket, in Kata Bay
- Airport: Phuket, 48 km
- Transfer time: 1 hour

Temperatures (°C) and climate

	N	D	J	F	M	A	M
Max.	32	32	33	34	34	34	33
Min.	25	25	25	25	26	26	26



Vacances Siam (Club Med) Ltd.
 3rd Floor, The Peninsula Plaza, Room no. 325
 153 Rajdamri Road, Lumpini, Patumwan, Bangkok 10330
 Tel: +66 2 253 0108 Fax: +66 2 253 9778
 Email: Sales.Thailand@clubmed.com

